

# HYDROSTRATIGRAPHIC UNITS OF FLORIDA



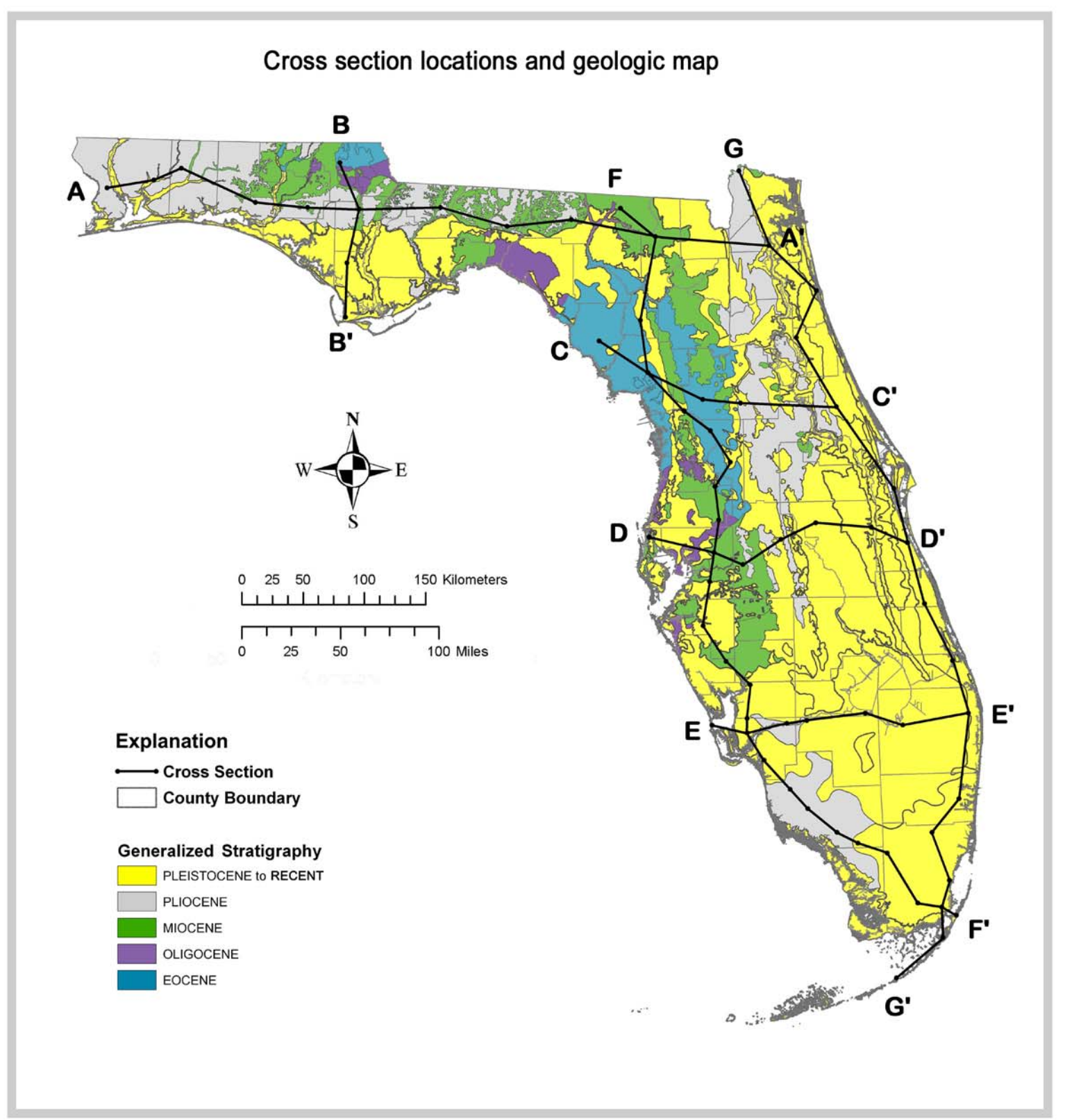
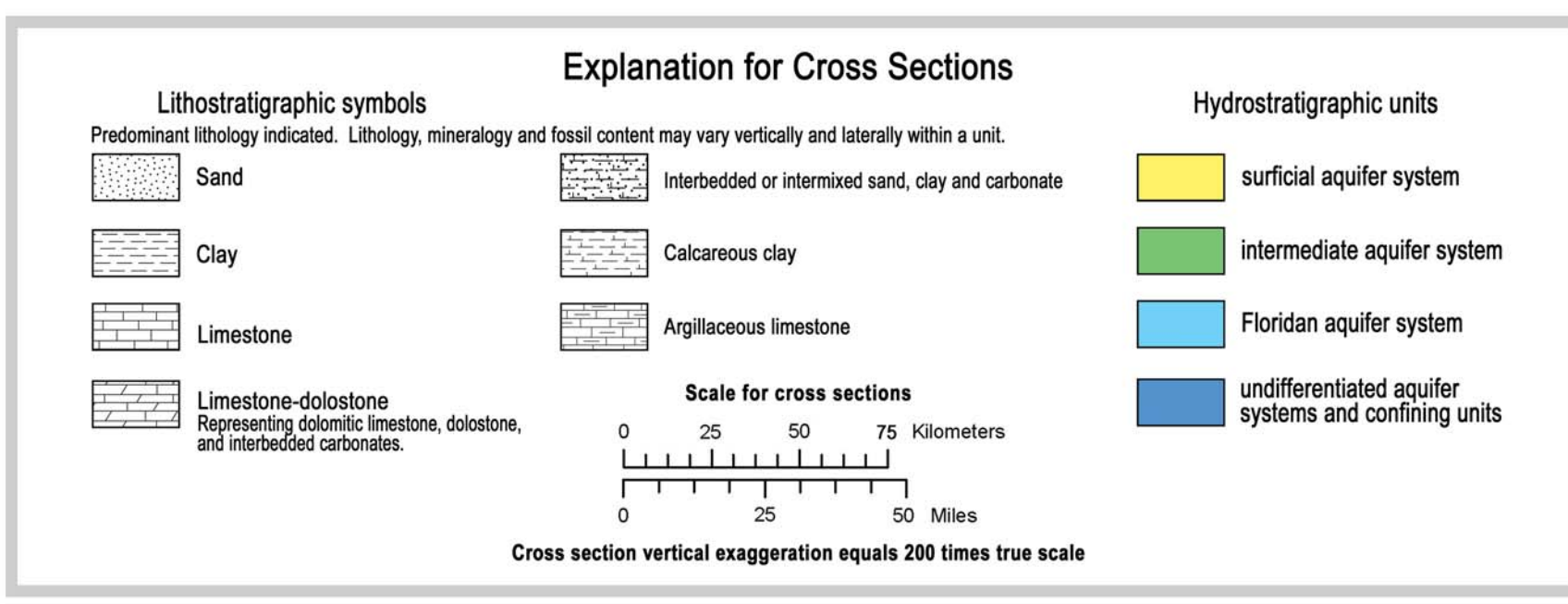
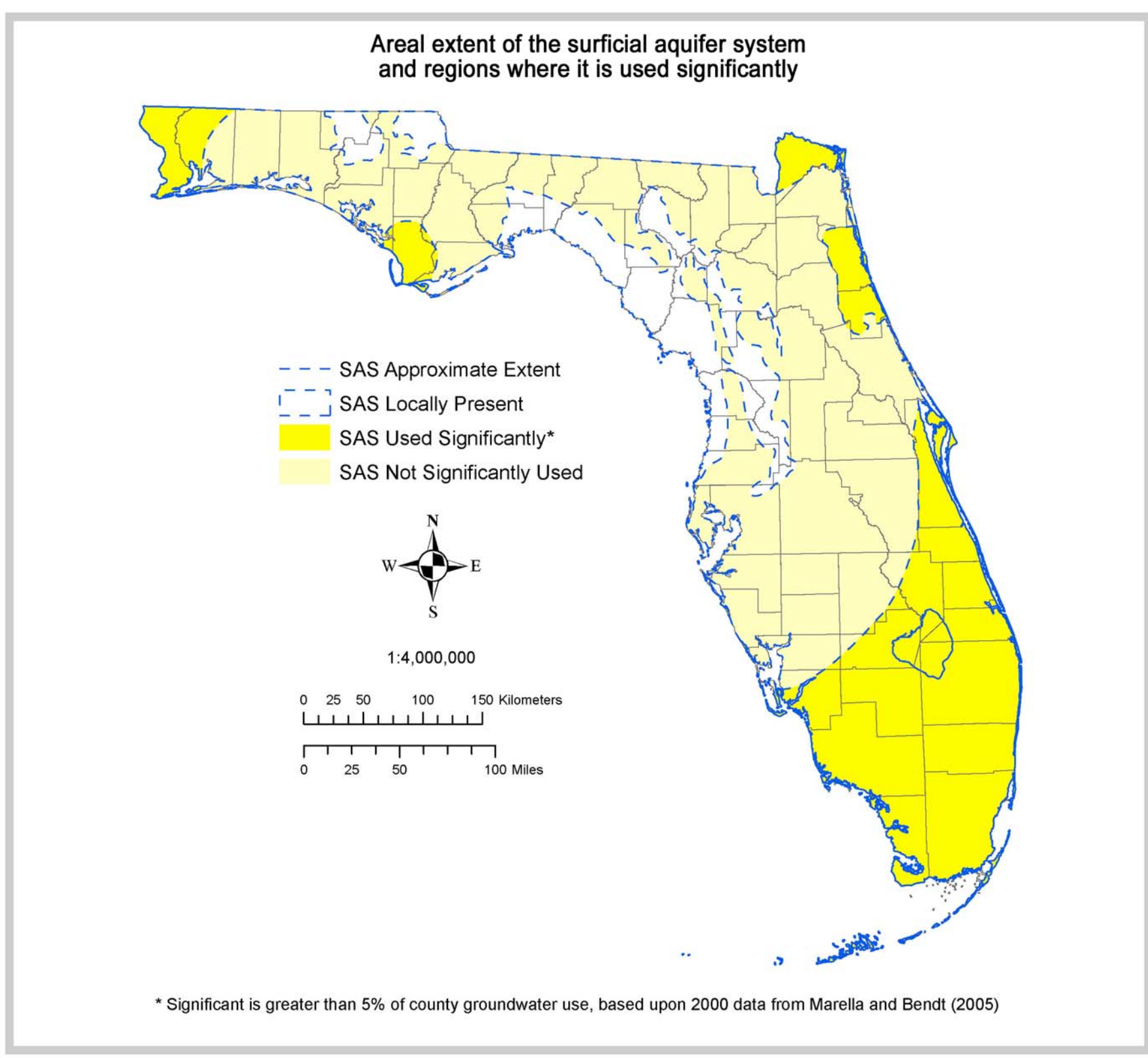
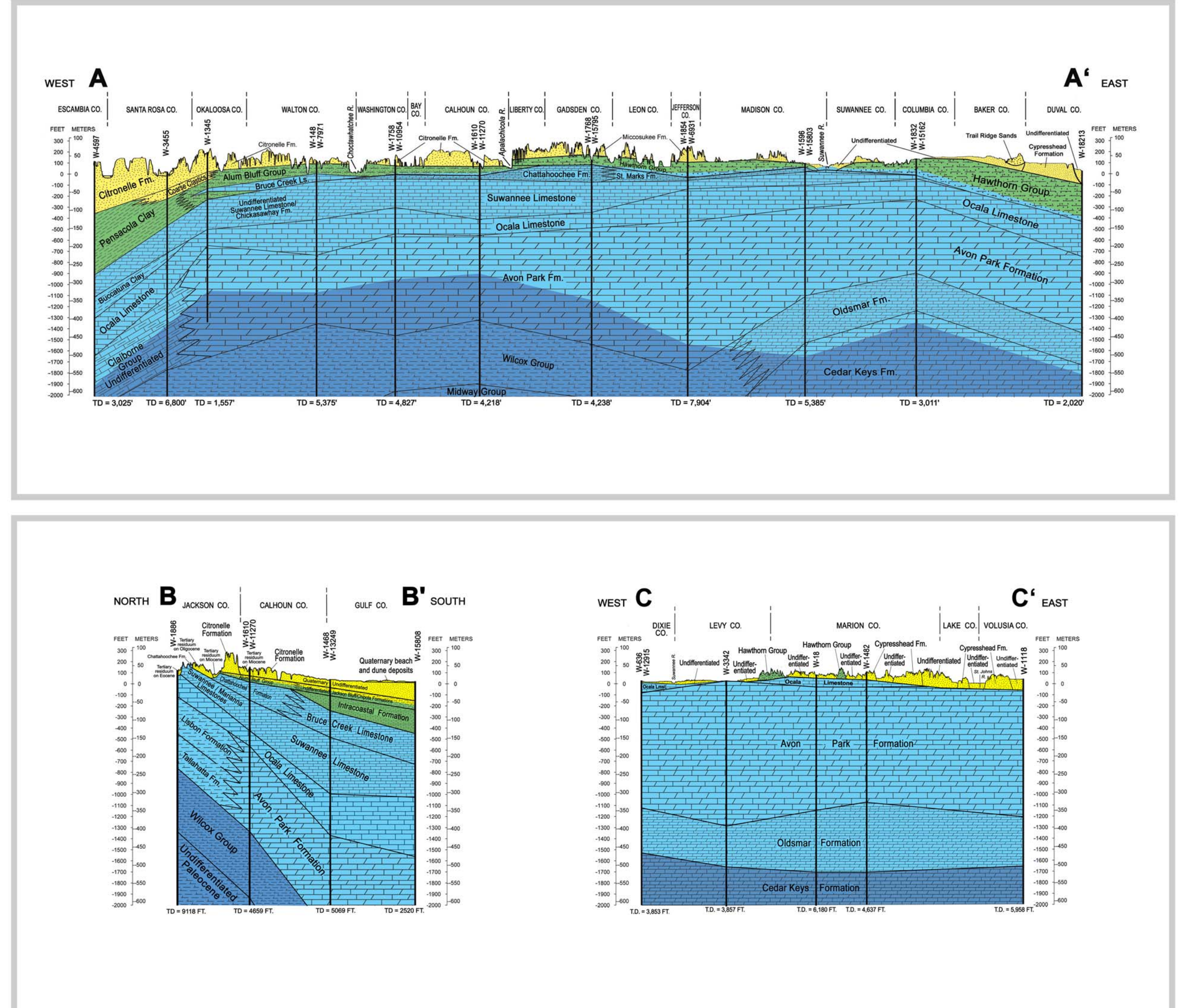
Florida Department of Environmental Protection  
 FLORIDA GEOLOGICAL SURVEY  
 Poster No. 16  
 2009



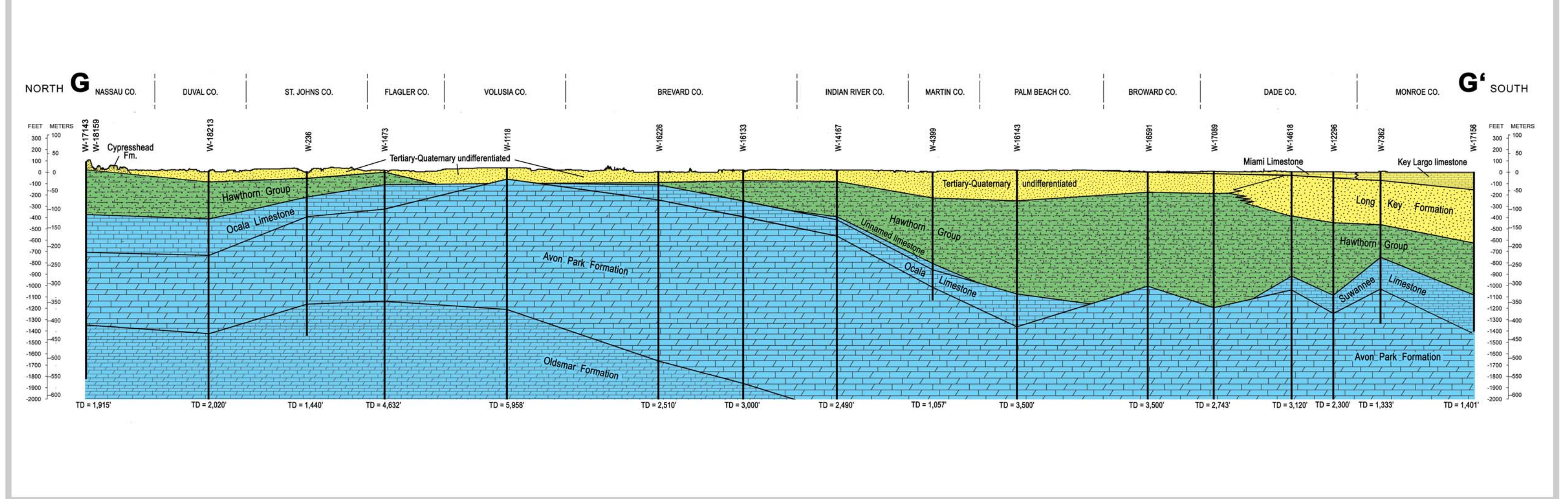
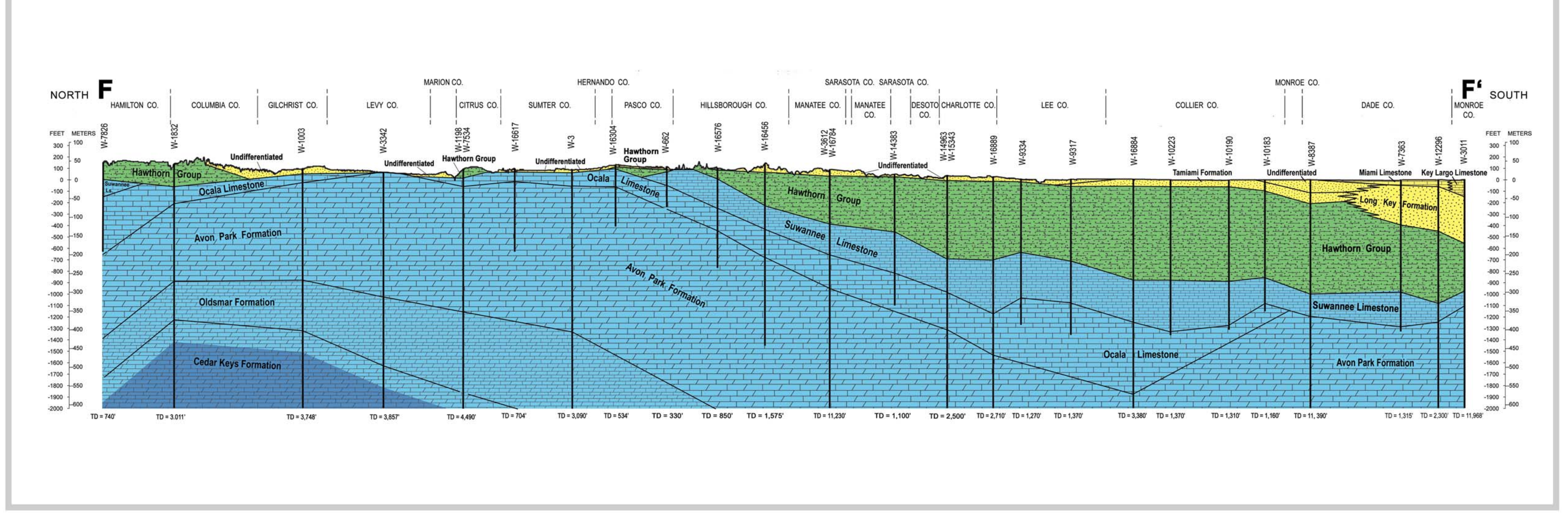
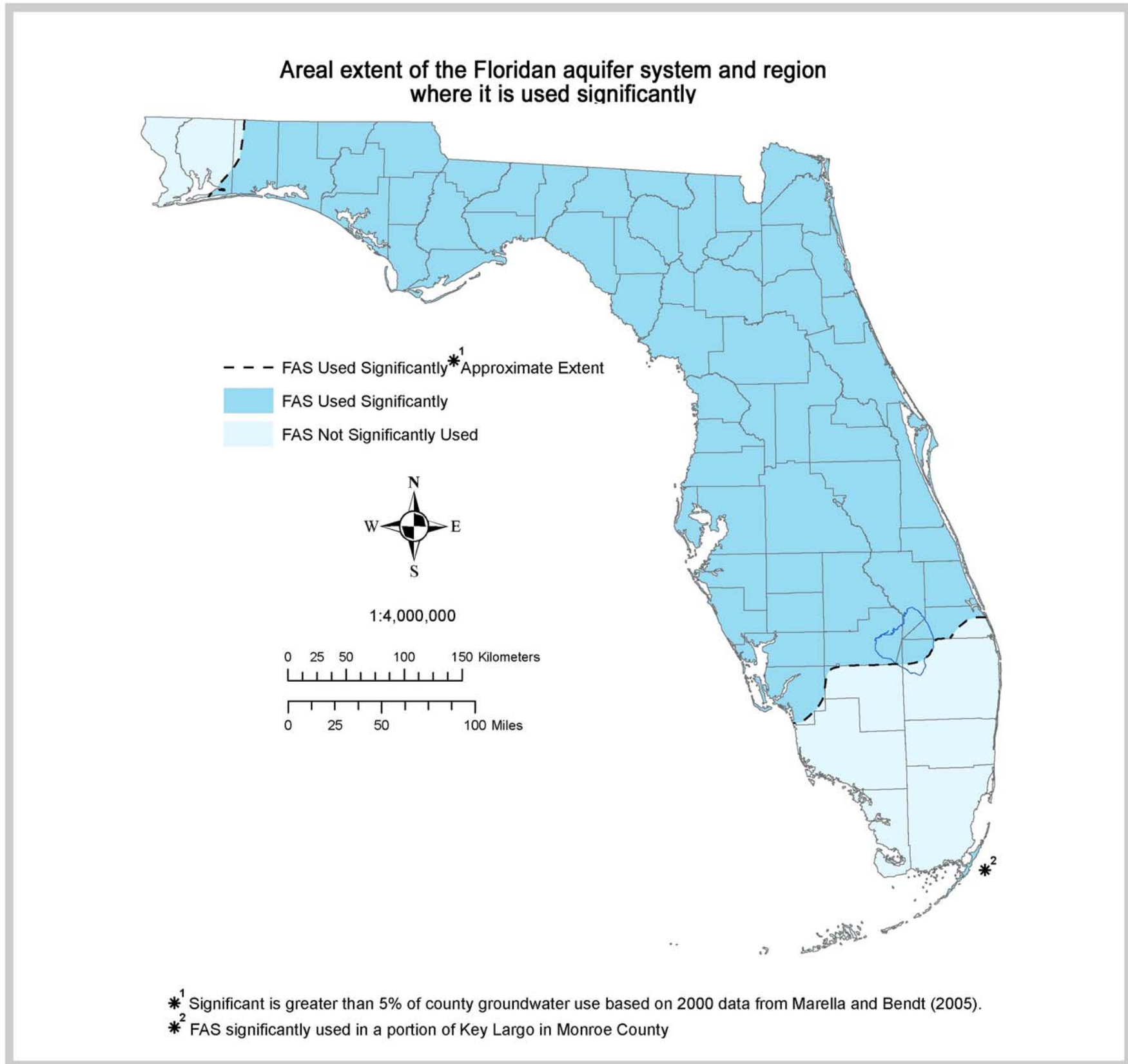
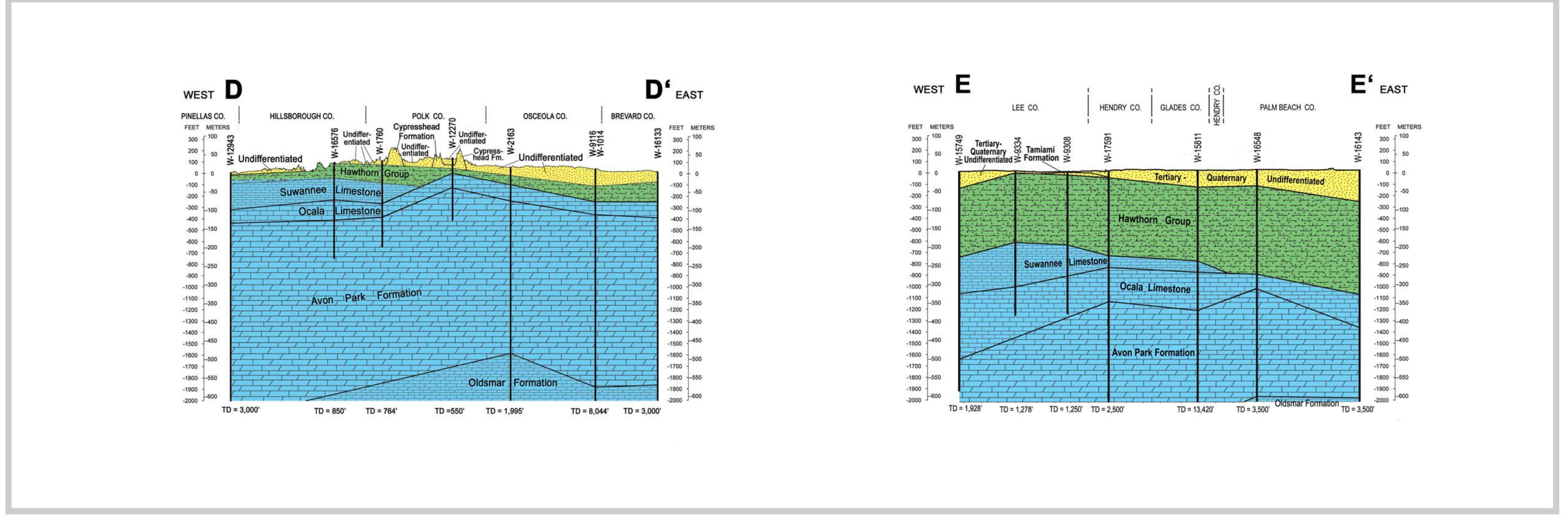
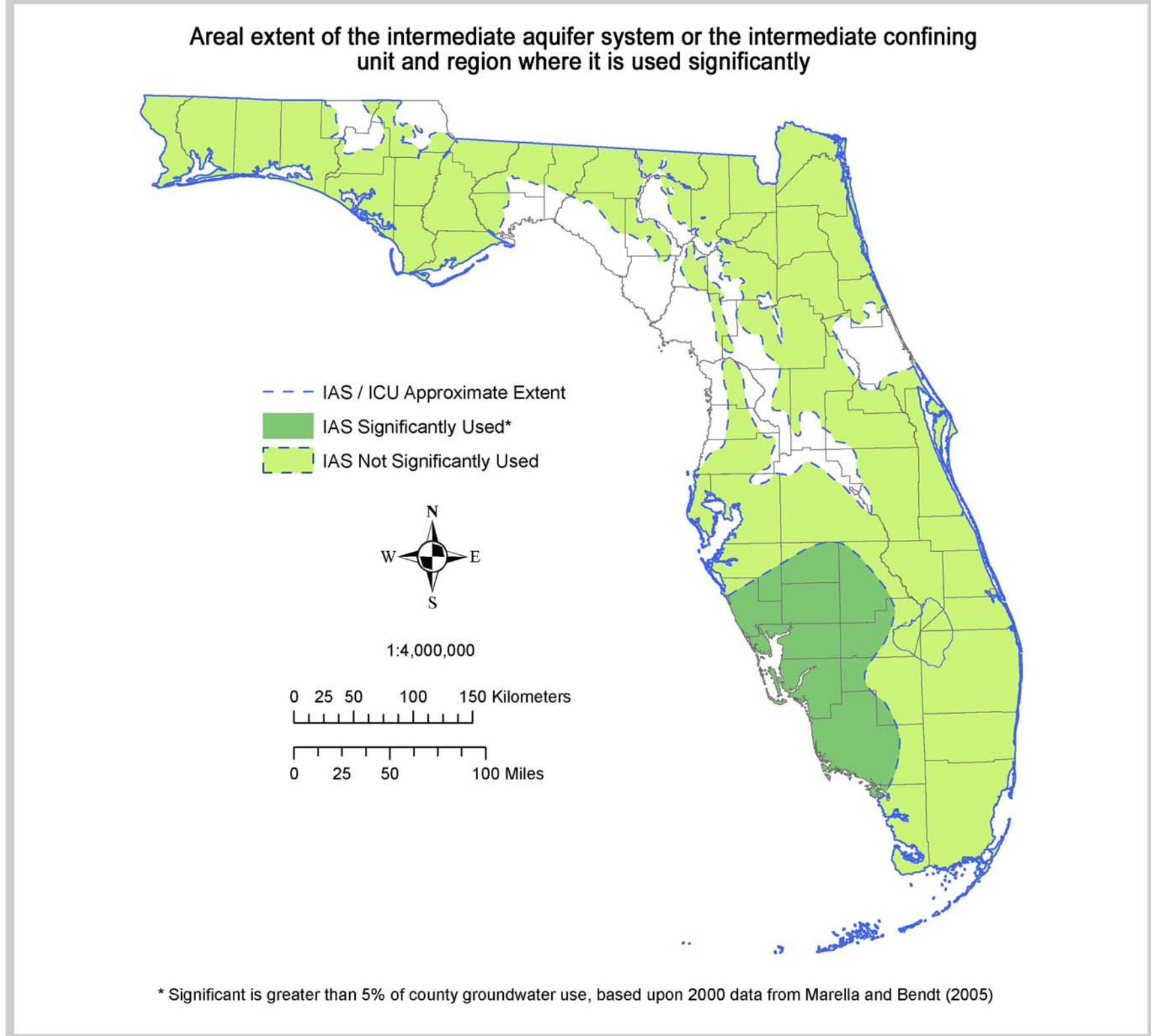
## The Second Ad Hoc Committee on Florida Hydrostratigraphic Unit Definition

- Rick Copeland, Florida Geological Survey, Florida Department of Environmental Protection, Chairman  
 Jon Arthur, Florida Geological Survey, Florida Department of Environmental Protection  
 Kris Barrios, Northwest Florida Water Management District  
 Terry Bengtson, South Florida Water Management District  
 Michael Bennett, South Florida Water Management District  
 Marian Berndt, U.S. Geological Survey  
 Ron Ceryak, Suwannee River Water Management District  
 Jim Clayton, Southwest Florida Water Management District  
 Kevin Cunningham, U.S. Geological Survey  
 Jeff Davis, St. Johns River Water Management District  
 Rich Deuerling, Florida Department of Environmental Protection (deceased)  
 Dave DeWitt, Southwest Florida Water Management District  
 Tony Gilboy, Southwest Florida Water Management District  
 Jeff Herr, South Florida Water Management District  
 David Hornsby, Suwannee River Water Management District  
 Brian Katz, U.S. Geological Survey  
 Mike Knapp, HydroDesigns Inc.  
 Lari Knochinmus, U.S. Geological Survey  
 Clint Kromhout, Florida Geological Survey, Florida Department of Environmental Protection  
 Gary Maddox, Florida Department of Environmental Protection  
 Jerry Mallams, Southwest Florida Water Management District  
 Jon Martin, University of Florida  
 Brian McGurk, St. Johns River Water Management District  
 Harley Means, Florida Geological Survey, Florida Department of Environmental Protection  
 Patty Metz, U.S. Geological Survey  
 Jim Miller, U.S. Geological Survey (retired)  
 Tom Missimer, Missimer Groundwater Sciences, Inc.  
 Louis Murray, U.S. Geological Survey  
 Doug Munch, St. Johns River Water Management District  
 Tom Pratt, Northwest Florida Water Management District (deceased)  
 Ron Reese, U.S. Geological Survey  
 Chris Richards, Northwest Florida Water Management District  
 Emily Richardson, South Florida Water Management District  
 Tom Scott, SDII Global Corporation, Inc.  
 Tom Seal, Florida Department of Environmental Protection  
 Karin Smith, South Florida Water Management District  
 Rick Spechler, U.S. Geological Survey  
 Dan Spangler, University of Florida (retired)  
 Sam Upchurch, SDII Global Corporation, Inc.  
 Warren Zwanka, St. Johns River Water Management District

Poster design by Paulette Bond. Graphics by Frank Rupert, Clint Kromhout, and Rick Green.



| SYSTEM               | SERIES      | PANHANDLE FLORIDA          |  | NORTHERN FLORIDA           |  | SOUTHERN FLORIDA           |  |
|----------------------|-------------|----------------------------|--|----------------------------|--|----------------------------|--|
|                      |             | FORMATION                  | HYDROSTRATIGRAPHIC UNIT                                    | FORMATION                  | HYDROSTRATIGRAPHIC UNIT                                    | FORMATION                  | HYDROSTRATIGRAPHIC UNIT                                    |
| QUATERNARY           | PLEISTOCENE | Undifferentiated sediments | surficial aquifer system                                   | Undifferentiated sediments | surficial aquifer system                                   | Undifferentiated sediments | surficial aquifer system                                   |
|                      |             | Chloride Formation         | surficial aquifer system                                   | Undifferentiated sediments | surficial aquifer system                                   | Key Largo Limestone        | surficial aquifer system                                   |
|                      |             | Jackson Bluff Formation    | surficial aquifer system                                   | Undifferentiated sediments | surficial aquifer system                                   | Avon Park Formation        | surficial aquifer system                                   |
| TERTIARY             | MIOCENE     | Coahuila Formation         | intermediate aquifer system or intermediate confining unit | Hawthorn Group             | intermediate aquifer system or intermediate confining unit | Hawthorn Group             | intermediate aquifer system or intermediate confining unit |
|                      |             | Parrot Bay Formation       | intermediate aquifer system or intermediate confining unit | St. Marks Formation        | intermediate aquifer system or intermediate confining unit | Hawthorn Group             | intermediate aquifer system or intermediate confining unit |
|                      |             | Chickasaw Formation        | intermediate aquifer system or intermediate confining unit | Suwannee Limestone         | Floridan aquifer system                                    | Suwannee Limestone         | Floridan aquifer system                                    |
| TERTIARY             | OLIGOCENE   | Suwannee Limestone         | Floridan aquifer system                                    | Suwannee Limestone         | Floridan aquifer system                                    | Suwannee Limestone         | Floridan aquifer system                                    |
|                      |             | Ocala Limestone            | Floridan aquifer system                                    | Ocala Limestone            | Floridan aquifer system                                    | Ocala Limestone            | Floridan aquifer system                                    |
|                      |             | Avon Park Formation        | Floridan aquifer system                                    | Avon Park Formation        | Floridan aquifer system                                    | Avon Park Formation        | Floridan aquifer system                                    |
| TERTIARY             | EOCENE      | Oldsmar Formation          | undifferentiated aquifer system and confining units        | Oldsmar Formation          | undifferentiated aquifer system and confining units        | Oldsmar Formation          | undifferentiated aquifer system and confining units        |
|                      |             | Cedar Keys Formation       | undifferentiated aquifer system and confining units        | Cedar Keys Formation       | undifferentiated aquifer system and confining units        | Cedar Keys Formation       | undifferentiated aquifer system and confining units        |
| CRETACEOUS AND OLDER |             | Undifferentiated           | undifferentiated aquifer system and confining units        | Undifferentiated           | undifferentiated aquifer system and confining units        | Undifferentiated           | undifferentiated aquifer system and confining units        |
|                      |             | Undifferentiated           | undifferentiated aquifer system and confining units        | Undifferentiated           | undifferentiated aquifer system and confining units        | Undifferentiated           | undifferentiated aquifer system and confining units        |



\* Significant is greater than 5% of county groundwater use based on 2000 data from Marella and Bendt (2005).  
 \* FAS significantly used in a portion of Key Largo in Monroe County